

# EARLY NON-FINITE FORMS IN CHILD ROMANIAN

LARISA AVRAM<sup>1</sup>, MARTINE COENE<sup>2</sup>

**Abstract:** The properties of the early verbal forms in child Romanian are analysed with a view to identifying a possible optional infinitive analogue in this language. In particular, we investigate the following early verbal forms: (i) the imperative, as predicted by the Imperative as the Optional Infinitive Analogue Hypothesis (IAH) (Salustri, Hyams 2003, 2006) and (ii) the third person singular present tense form of the indicative, as proposed for Catalan and Spanish by Grinstead (1998, 2000). We argue that the form which Romanian children overuse is the present tense of the indicative; the optional infinitive analogue, however, is the bare subjunctive, an inflected verbal form without the subjunctive marker *să*. We therefore propose that the early overused form that children might use does not necessarily have the properties of optional infinitives.

**Keywords:** Optional Infinitive Analogue, Bare Subjunctive, Romanian.

## 1. INTRODUCTION

It is a well-documented fact that during the early stages of language acquisition children use non-finite forms in contexts where the adult grammar requires a finite construction. Cross-linguistic investigation has revealed that these are usually verbal forms which are overused at one particular developmental stage. The list includes infinitives, participles (Paradis, Crago 2001), bare perfectives (Varlokosta *et al.* 1996, Hyams 2002, 2005), as well as finite forms ‘in disguise’, i.e. verbal forms which are fully inflected but which do not behave like their genuine finite counterparts. This is the case of the third person singular form of the present tense of the indicative (Grinstead 1998, 2000, Paradis, Crago 2001) or the imperative (Salustri, Hyams 2003, 2006). The particular form as well as the length of the developmental stage during which it is attested have been argued to be language specific (Wexler *et al.* 2004, Legate, Yang 2007). But the availability of an early stage when non-finite forms are used in contexts in which a finite form is required seems to be universal.

In spite of the variety of non-finite forms attested across child languages, there is one that has received special attention in the acquisition literature: the infinitive. Optional infinitives (OIs) used in contexts in which the target language

<sup>1</sup> University of Bucharest, avram.larisa@g.unibuc.ro.

Work on this paper was supported by CNCSIS-UEFISCDI, project PN II Idei 1979/2008.

<sup>2</sup> Free University, Amsterdam, mmmr.coene@let.vu.nl.



- (i) Do Romanian children use OIs during the early stages? If they do, how long is the OI stage?
- (ii) If Romanian children do not use OIs, is there an OI-analogue which they use during the early stages when finiteness is being acquired?

The results of this investigation may provide an interesting insight into the nature of early non-finite forms across languages. This is because Romanian is a Romance ILNSL with Balkan properties. The distribution of the infinitive is more restrictive than in other Romance languages, being replaced by the subjunctive in contexts in which the subjunctive appears in Modern Greek, a Balkan language.

The paper is organized as follows. Section 2 briefly presents previous findings with respect to the early non-finite forms in child grammars, with a focus on ILNSLs. In Section 3, longitudinal data of child Romanian are analysed with the aim of identifying the OI-analogue in this language. We consider the infinitive, the imperative and the present tense of the indicative. We argue that the OI-analogue is actually a language specific form, the bare subjunctive. The present tense of the indicative is overused during the early stages but it does not have the properties of the OI. The conclusions are summarized in Section 4.

## 2. EARLY NON-FINITE FORMS IN ROMANCE

### 2.1. Optional infinitives in null subject languages

The optional use of the infinitive in root clauses during the early stages of language acquisition has been extensively analysed in a variety of languages (Dutch, French, German, English, Russian, etc.). During the OI-stage the infinitival form of the verb is optionally used instead of the finite form (Wexler 1994); but the child recognises the infinitive as a grammatical construction different from the finite form of the verb and places it in the appropriate structural position. The data also show that children have tacit knowledge of the non-finiteness of the infinitive: they rarely negate OIs, *wh*-questions with infinitival verbs are absent or extremely rare, auxiliaries occur in finite clauses but not in OIs, subjects tend to be overt in finite clauses but either null or erroneously case-marked in OIs. All these facts have been interpreted as evidence that OIs cannot be interpreted as the result of lack of knowledge of inflection. What the child does not seem to know yet is that OIs are disallowed in those contexts which require a finite form.

As mentioned in the previous section, there seems to be a systematic difference between NNSLs like English, German, Dutch, Swedish or French, where OIs have been attested, and ILNSLs like Italian, Spanish, Catalan, where OIs are either completely absent or extremely rare. In such languages, fully inflected verbal forms are attested from the onset of acquisition.

There is no consensus, however, with respect to the complete absence of an OI stage in ILNSLs. For Italian, for example, Guasti (1993/1994) shows that Martine uses infinitives 22% at 1;9 but only 16% at 1;11. OIs are also attested in child Spanish, though at a low rate (see Buesa García 2007). As already mentioned, Licerias *et al.* (2007) provide evidence that OIs are used by children acquiring ILNSLs such as Catalan, Spanish and Basque, especially at earlier stages. The percentage of early infinitives, though, is significantly lower than in NNSLs and they are attested during a shorter period of time. This is not unexpected; several studies argue that children who acquire an ILNSL would acquire finiteness or verbal functional categories very early (Torrens 1995, Phillips 1995, Legate, Yang 2007). Torrens (1995), for example, shows that Spanish and Catalan children use inflected verbal forms correctly as early as 1;9. This is why even when low percentages of early infinitives are attested in some ILNSLs, they are used for a very short period of time. This could make the identification of this stage difficult, especially in longitudinal corpora which do not contain very early recordings/transcripts.

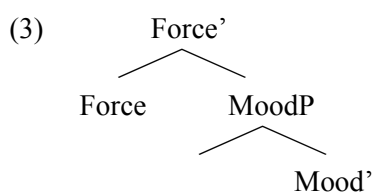
Several studies which investigate the early verbal forms in ILNSLs, such as Ezeizabarrena (1997) and Grinstead (1998, 2000), for example, argue that the fully inflected forms which children use during the early stages have the properties of OIs. They propose that the analogue of the OI in Spanish and Catalan is the third person singular of the present tense of the indicative. The same analogue is proposed for Spanish in a bilingual setting (Spanish/English) (Castro, Gavruseva 2003).

Other researchers identify several verbal forms which are not used in a target-like manner. According to them, some finite forms can behave as OIs instead of or in addition to non-finite verb forms; these are early default forms (Paradis, Crago 2001, Pratt, Grinstead 2007). In French, for example, children would use the third person singular form of the present tense of the indicative in addition to the past participle and the infinitive. The variety of possible OI-analogues led Wexler *et al.* (2004) to the conclusion that the OI-analogue is a frequently used underspecified form, language-specific.

## 2.2. Early non-finite forms and modality

The semantic properties of OIs are addressed in Hoekstra, Hyams (1998); they argue that OIs are compatible with a prevalent modal interpretation (mainly deontic and volitional), “determined by the inherent quality of infinitives as being marked [-realized]” (Hoekstra, Hyams 1998:103). This generalization is known as the Modal Reference Effect (MRE). Because of the prevalent deontic value of the

form, the verbs which appear as OIs are mainly eventives. Since this is a semantic property, one would expect a similar effect to show up across languages, even in those for which an OI stage has not been attested. Salustri, Hyams (2003) start precisely from this assumption, i.e. that the mapping of irrealis mood onto a tenseless clausal structure is a universal property of the OI stage. They propose that in ILNSLs the analogue to the OI is the imperative which has mainly deontic modal meaning and is restricted to eventive predicates. On their analysis imperative verbs check an irrealis feature in a MoodP. Importantly, imperatives are not marked for either tense or agreement, which are underspecified; therefore, an imperative configuration lacks tense and agreement projections, i.e. there is no intervening projection between the verb and MoodP:



Their arguments are that in ILNSLs (i) imperatives occur more frequently in child language than in adult speech, and (ii) they are more frequently encountered than in the early grammar of the children who are acquiring an OI language.

One should also mention that, according to Salustri, Hyams (2003), early imperatives and early OIs can co-exist, though with different frequencies.

### 2.3. Predictions for Romanian

As shown in the previous section, the findings reported in previous studies indicate different developmental routes for children who acquire an ILNSL. According to one direction, children would go through a stage when they actually use the infinitive in finite contexts, though the use is low and the forms are attested only during the very early stages. Other studies argue that there is an equivalent of the OI stage in every language and they try to identify OI analogues. The search for an OI analogue follows two main directions. One focuses on the non-finiteness of OI structures. The OI analogue in ILNSLs is, according to this view, the third person singular form of the present tense of the indicative, which is not used in a target-like way. The second direction focuses on the modal value of child OIs and identifies the imperative as a possible OI analogue. Importantly, such an approach assumes that imperatives have underspecified tense and agreement features.

The early verbal forms, possible analogues of the OI, which one could find in child Romanian, a Romance ILNSL, are the following: (i) the infinitive (though with a very low frequency); (ii) the present tense of the indicative; (iii) the imperative. In what follows we will be considering these accounts against data from child Romanian.

### 3. EARLY NON-FINITE FORMS IN CHILD ROMANIAN

#### 3.1. Data and method

Our analysis relies on data coming from two longitudinal corpora of monolingual Romanian (B. 1;3-3;2 and A.1;9-3;6), consisting of 60 minute audio recordings of natural unstructured conversations. The investigated files have been transcribed according to the CHILDES system (MacWhinney 2000) and, for child B., they are available on CHILDES. The child data analysed for the present study are summarized in Table 1 below.

Table 1

Child data used in the analysis

Child	Age	MLU	Number of examined files	Number of examined verbal forms
A.	1;9 – 2;6.30	1.514 – 2.730	11 (= 11 h)	1,804
B.	1;6 – 2;11	1.122 – 2.790	21 (= 21 h.)	1,919
TOTAL			32 (= 32 h)	3,723

Each verbal form was coded in terms of morphological status (indicative, subjunctive, imperative, infinitive) and intended meaning (temporal, modal). The following examples illustrate how coding was done:

- (4) a. present tense of the indicative (temporal value):  
*Se joacă* Antonio cu ele.  
 refl.3rd sg play.3rd sg Antonio with them  
 ‘Antonio is playing with them.’ (A. 2;6)
- b. present tense of the indicative (modal value):  
 nu # cu baba # *că(u)tăm* baba.  
 no # with old woman.the # look.1st pl for old woman.the  
 ‘No, with the old woman, let’s look for the old woman.’ (B. 1;10)
- c. bare past participle (aux omission):  
 nu vrut                      pisica  
 no want-past part cat.the  
 ‘She (has) not wanted the cat.’ (B. 2;2)

- d. indicative mood - periphrastic past:  
 n'am ște(r)s.  
 no have.1st wiped  
 'I haven't wiped (it).' (B. 2;5)
- e. bare subjunctive:  
 Hai să facem un castel. Aicea *facem* o castel.  
 'Let's build a castle. Let's build a castle here.' (B. 2;4)
- f. subjunctive:  
 Vreau să *strig* la rața.  
 want 1st sg *să* shout 1st sg at duck.the  
 'I want to call the duck.' (B. 2;2)
- g. subjunctive in periphrastic forms:  
 am să strig.  
 aux.1st sg *să*.subj. shout.1st sg  
 'I am going to shout.' (B. 2;2)
- h. imperative  
 Hai mănâncă!  
 come on eat IMP 2nd sg  
 'Come on, eat!' (A. 2;9)

Imitations, repetitions, formulaic uses and unclear forms were not included in the analysis. We compared our data to findings reported for other child languages.

### 3.2. Optional infinitives in child Romanian?

One interesting fact is that no early infinitive has been attested in the files which we examined (see also Coene *et al.* 2005, Avram 2010, for similar conclusions). The Romanian data provide evidence in favour of Wexler's (1998) generalization, according to which there is no OI-stage in ILNSLs. In this respect, child Romanian differs from other Romance null subject languages for which low percentages of early infinitives have been reported (Liceras *at al.* 2007). The comparison is summarized in Table 2 below:

Table 2

Early OIs: Frequencies in Romanian compared to NNSLs and other ILNSLs

Type of language	Language	Child	Age	% of OIs
NNSL	French	Nathalie (Pierce 1992)	1;9	96%
	Swedish	Markus (Rohrbacher, Vainikka 1994)	1;9-1;11	82%
		Embla (Guasti 1994)	1;8-1;10	61%
	Dutch	Peter (Wijnen 1994) Tobias (Weverink 1989)	1;9 -1;11 1;10-1;11	94% 36%

Table 2 (continued)

ILNSL	Catalan	Julia (Licerias <i>et al.</i> 2007)	1;10	21%
	Spanish	Maria (Licerias <i>et al.</i> 2007)	1;7	20%
	Basque	Mikel (Licerias <i>et al.</i> 2007)	1;7-1;11	31.6%
		Oitz (Licerias <i>et al.</i> 2007)	1;6-2;2	38.6%
	Romanian	A.	1;9 – 2;6	0%
B.		1;6 – 2;11	0%	
I. (Avram 2010)		1;9	0%	

One should notice that at least for one of the children in our corpora, the recordings began at a very early age (1;6). However, no early infinitive has been found in the available transcripts.

Contemporary Romanian has an infinitive, on a par with other Romance languages, but it has been replaced by the subjunctive in a variety of contexts in which the infinitive is used in Romance. Modal verbs, for example, with the exception of *a putea* ‘can’<sup>4</sup>, do not take infinitival complements, but subjunctive ones:

- (5) a. Ei pot să deseneze/desena.  
they can.3<sup>rd</sup> pl. *să* draw.3<sup>rd</sup> pl. / draw  
‘They can draw.’  
b. Vreau să plec/\*pleca.  
want.1<sup>st</sup> sg *să* leave.1<sup>st</sup> sg./ \*leave  
‘I want to leave.’  
c. Trebuie să termini lucrarea/\*termina lucrarea.  
must *să* finish.2<sup>nd</sup> sg paper.the/\*finish paper.the  
‘You must finish the paper.’

The subjunctive is also used in the equivalent of the so-called “mad magazine” sentences (where the infinitive is never an option) (6) and in some periphrastic forms which express futurity (7a) and which are used in the spoken language to the detriment of the periphrastic future with the auxiliary *vrea* ‘will’, followed by a bare infinitive (7b):

- (6) Ion să te ajute când ai nevoie? Niciodată!  
Ion *să* you.Acc help.2<sup>nd</sup> sg when have.2<sup>nd</sup> sg need? Never.  
‘Ion help you when you need help? Never!’  
(7) a. Ion o să plece la munte.  
Ion aux *să* leave.3<sup>rd</sup> sg at mountain  
‘Ion will go to the mountains.’  
b. Ion va pleca la munte.  
Ion will.3<sup>rd</sup> sg leave at mountain  
‘Ion will go to the mountains.’

<sup>4</sup> But such constructions are rarely used in the contemporary language.



The very low frequency of infinitive forms in the input may explain the lack of OIs in child Romanian.

### 3.3. The imperative: the OI analogue in child Romanian?

#### 3.3.1. *The imperative as the OI analogue*

As mentioned in section 2.2, according to the Imperative as the OI Analogue Hypothesis (IAH) put forth by Salustri, Hyams (2003), in ILNSLs, the imperative has the properties of OIs in OI languages. In this section we investigate whether the IAH is borne out by the Romanian data.

The first prediction of the hypothesis is that children will use more imperatives than adults do. In order to test this prediction we compared the use of imperatives in child and adult Romanian. For the comparison with adult speech we investigated both child-directed speech and adult-directed speech in informal conversation. For the former, we examined the use of imperatives by adults engaged in conversation with the child in some of our own recordings (in the A. and in the B. files), for the latter we relied on the corpus of spontaneous conversation available in Dascălu-Jinga (2002). The data are summarized in Table 3:

Table 3

Adult data used in the analysis

Type of data	Source	Nr of examined verbal forms
Child-directed speech	B. 1;8	543 (60')
	B. 2;2	579 (60')
	A. 3;5	684 (60')
Adult-directed speech (informal conversation)	Dascălu-Jinga (2002)	
	Adult 1 (CJ)	481 (approx.30')
	Adult 2 (VJ)	416 (approx.30')

The analysis of the verbal forms used in the two corpora reveals that Romanian children do not overuse the imperative. The comparison of the frequency of imperatives in child (Table 4) and adult speech (Table 5) shows that Romanian children use the imperative less frequently than adults do in child-directed speech.

Table 4

The use of the imperative in child Romanian

Child	% Imperative	Verb utterances
A. 1;9-2;6.30	6.04% (n=109)	1,804
B. 1;10 -2;9	9.90% (n=190)	1,919

Table 5

The use of the imperative in child-directed

Type of discourse	Source	% IMP	Verb utterances
Child-directed speech	B. 1;8	Adult 1: 14.28%	154
		Adult 2: 13.11%	389
	B. 2;2	Adult 1: 8.1%	269
		Adult 2: 11%	310
	A. 3;5	Adult 1: 12.86%	684
Adult-directed speech	Dascălu-Jinga (2002)	CJ :0.6 % (n=3)	481
		VJ :1.7 % (n=7)	416

The analysis also reveals, as expected, that the use of imperatives in adult speech is sensitive to discourse type. The percentage is lower in adult-directed speech. At first sight, it seems that we do not have conclusive evidence either in favour of or against the first prediction made by the IAH. Children use the imperative at a rate comparable to that of imperatives used by adults in child-directed speech, but higher than the rate of imperatives in adult-directed speech. However, the comparison with the data coming from child-directed speech is the relevant one, since we are comparing the use of the imperative in a similar conversational setting. This is why we believe that the first prediction made by IAH is not borne out by the Romanian data.

In order to test the second prediction, according to which Romanian children would use the imperative more frequently than their peers who are acquiring an OI language, we compared the use of imperatives in child Romanian to the use of the imperative in OI languages as well as in non-OI languages. The comparison of the percentage of imperatives in early child Romanian to the one reported for other null subject languages indicates that the imperative is less frequently used in the former. On the other hand, it seems that Romanian children use the imperative at a rate similar to the one attested for child German, an OI language. The data are summarized in Table 6:

Table 6

The use of imperatives in child Romanian vs. other null-and non-null subject languages

Language	Source	% Imperative
Child-Italian	Salustri, Hyams (2003)	27.5
Child-Slovenian	Rus, Chandra (2006)	56
Child Spanish	Liceras, Bel, Perales (2006)	29.6
Child Catalan	Liceras, Bel, Perales (2006)	29.4
Child German	Salustri, Hyams (2003)	10
Child Romanian		8

The data indicate that the second prediction is not borne out by the Romanian data either. Romanian children do not use the imperative at a rate higher than the one found in OI-languages.

Importantly, the analysis of imperatives in child Romanian indicates a slight increase across files, not a decrease, as expected if the imperative were a sort of an early overused form. The trendline in Figure 1 shows that the use of the imperative slightly increases with age in both corpora:

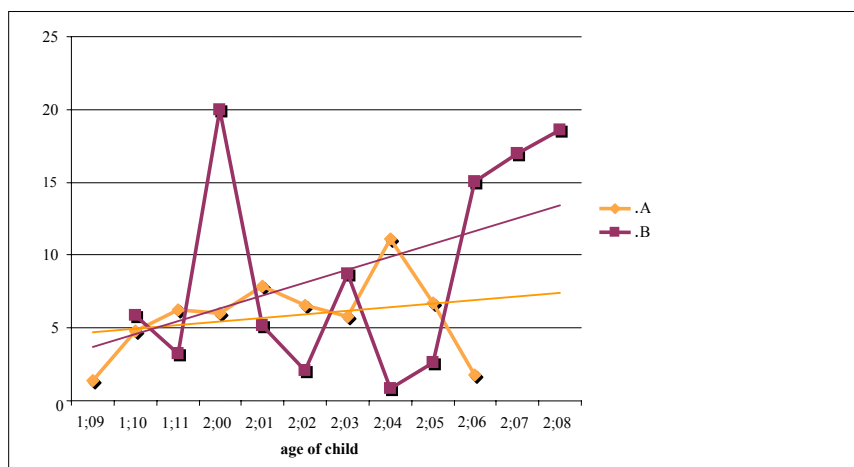


Fig. 1. The use of imperatives across files in corpora A. and B. (% on total verb utterances).

The data examined so far show a relatively low percentage of imperatives ( $280/3487 = 8\%$ ) in child Romanian, especially during the early stages. Imperatives are not more frequent in child language than in child-directed adult speech. Importantly, they do not decrease over time; on the contrary, there is a slight increase across files in both corpora. This shows that the imperative cannot be analysed as an overused verbal form in child Romanian. Nor can one notice any optionality in the use of the imperative, which indicates that it cannot be the OI analogue, in spite of its jussive semantic feature. Our conclusion is not singular. Rus, Chandra (2006), for example, also argue that not all null subject languages need choose the imperative as an OI-analogue.

Two questions arise at this point: (i) why isn't the imperative the OI-analogue in child Romanian? and (ii) which is the OI-analogue in child Romanian? We will be addressing these questions in the next sections.

### 3.3.2. *Why the imperative is not an OI-analogue in child Romanian*

#### 3.3.2.1. *Imperative structures in adult Romanian*

In order to understand why child Romanian differs from other null subject languages with respect to the use of the imperative during the early stages one has to analyse the properties of the imperative and its use in the target grammar.

One important fact is that in adult speech the imperative is frequently substituted by the present subjunctive, which can be used as a “surrogate imperative”:

- (8) Să te duci acolo imediat!  
 Să you-ACC go 2<sup>nd</sup> sg there immediately  
 ‘Go there immediately!’

A second important fact is that the present tense of the indicative can also acquire directive illocutionary force:

- (9) Te duci acolo imediat și îți ceri scuze!  
 ‘You should go there immediately and apologize to them.’

This is why one usually makes a distinction between “true” imperatives (the ones with overt imperative morphology) and “surrogate imperatives” (i.e. the subjunctive, the indicative, the infinitive)<sup>5</sup>. Isac, Jakab (2004) propose that the imperative and the subjunctive check their imperative force in the same left-periphery position, MoodP (lower than ForceP and higher than NegP) but via different mechanisms: Merge of the modal particle *să* in the head of the left-periphery projection in the case of the subjunctive and verb movement to the same left-periphery position in the case of true imperatives. Indicatives with directive illocutionary force check their imperative feature via pragmatic inference.

That the verb moves to a higher projection only in the case of “true” imperatives can be seen from the way in which Accusative object clitics attach to the verb in each of these constructions. It is only in the case of “true” imperatives, illustrated in (10c), that the clitic surfaces in post-verbal position, indicating that the verb has moved to a position higher than the one occupied by the clitic (the head of TopicP in the left periphery, Avram 2000 or an FP, in Avram, Coene 2009). In (10a) the clitic surfaces in front of the verb, indicating that the verb is lower in the structure, in T/AgrP. Similarly, in (10b), the clitic surfaces in front of the inflected verb but follows the subjunctive marker *să*, which has been analysed as occupying a Mood projection, higher than T/AgrP (Avram 1999):

- (10) a. O duci imediat la gară.  
 her.Acc take.2nd sg immediately to station  
 b. Să o duci imediat la gară.  
 subj. her.Acc take.2nd sg immediately at station

<sup>5</sup> Vasilescu and Vântu (2008: 28–29) also list, among the various types of structures used with imperative value, the infinitive, as in *A nu se deschide fereastra* ‘Do not open the window’, and the supine, as in *De rezolvat aceste probleme până data viitoare!* ‘Solve these problems until next time!’. These two structures, however, are very rarely used in the spoken language and are not found in child-directed speech. This is why we are not discussing them in this section.





directive force either via Merge (the case of the subjunctive) or via pragmatic inference (the case of indicatives used with directive illocutionary force).

### 3.4. The present tense of the indicative: a possible OI-analogue?

The data discussed in the previous section indicate that the present tense of the indicative has the modal properties associated with OIs and that it could be the OI-analogue in Romanian. Previous studies have shown that this is indeed the most frequently encountered verbal form during the early stages in child Romanian (Coene *et al.* 2005, Avram 2010). 2<sup>nd</sup> and 3<sup>rd</sup> person singular forms of the present tense of the indicative are attested from the onset of acquisition and the percentages are similar to the ones reported for OIs in OI-languages. The comparison is summarized in Table 7:

Table 7

Frequencies of root verbal forms in early child speech

	Child	age	% of RI
French	Nathalie (Pierce 1992)	1;9	96%
Swedish	Markus (Rohrbacher, Vainikka 1994)	1;9-1;11	82%
	Embla (Guasti 1994)	1;08-	61%
Dutch		1;10	
	Peter (Wijnen 1994)	1;9-1;11	94%
	Tobias (Weverink 1989)	1;10-	36%
		1;11	
	Child	age	% of forms inflected for T and Agr
Romanian	A. (Avram, Coene 2005)	1;9	73%
	B. (Avram, Coene 2005)	1;9	87.5%
	I. (Avram 2010)	1;9	75%

The analysis of the early verbal forms in the files used for the present study also indicate that the present tense of the indicative seems to be the most frequently encountered form. In the examined files from the A. corpus 70.07% (=1,264) of all the inflected verbal forms are indicative present tense forms. The analysis also reveals that the third person singular form is a frequently encountered one. In the B. corpus, during the period 1;06-2;01, 49 % (n= 57) are 3<sup>rd</sup> person singular forms. In the A. corpus, during the period 1;09-2;06.30, the use of the 3<sup>rd</sup> person singular amounts to 48.6 % (n=878) of all the inflected forms.

The question is whether these early verbal forms have the properties of OIs. Among other properties, early infinitives used during the OI stage are non-finite and optionally used in finite contexts. To what extent can the attested present tense forms be analysed as non-finite non-agreeing forms with a modal value which optionally occur in finite contexts? Since they are all fully inflected forms, it is extremely difficult to analyse to what extent they match the *phi*-features of the intended subject when the subject is phonetically null (see also Pratt, Grinstead

2007). And obvious agreement errors, though attested, are extremely rare in the corpora which we examined.

The availability of overt Nominative subjects cannot be taken as a reliable test either because Romanian is a null subject language which allows phonetically null subjects in finite contexts. Moreover, overt Nominative subjects are allowed in sentences in which the morphological form of the verb is non-finite:

- (17) L-am văzut înainte de a pleca voi.  
 him have seen before of INF leave you.Nom  
 ‘We saw him before you left.’

This is why the analysis of early subjects cannot be a good indicator of finiteness. One should mention, however, that in both corpora overt Nominative subjects appear with indicative verbal forms.

In terms of interpretation, the present tense of the indicative is used in child Romanian with either a temporal value, or with modal value, both available in the target language. In the former situation, it is used to express present or future tense, in opposition with other forms (the periphrastic perfect and the bare past participle) which are used with past time reference. One should notice that the opposition present vs. past tense is robust extremely early in the Romanian corpora:

- (18) Nu e Babi. A p(l)ecat cu Titi.  
 ‘Babi is not here. She left with Titi.’ (B. 2;02)

At the same time, many present tense forms have the modal value identified for OIs, i.e. during the early stages of child Romanian these indicative mood forms can convey both modal and non-modal meanings. As already mentioned, the present tense of the indicative can also be used with directive force in adult speech as well. It matches both tense and mood features, with the latter being checked via pragmatic inference. But it is a property of early grammar that the present tense of the indicative matches the mood feature more often than in the adult grammar.

One non-trivial methodological problem, though, arises with contexts like those illustrated in (19) below. In a significant number of cases it is difficult to state whether the inflected form (mainly 1<sup>st</sup> and 2<sup>nd</sup> person) is an indicative or a bare subjunctive (BS), i.e. a subjunctive form without the modal particle *să*:

- (19) a. căutăm leul. [possible intended meaning = hai să căutăm leul]  
 look.1st pl lion.the [possible intended meaning = let us look for the lion ]  
 ‘Let’s look for the lion.’ (B. 1;10)  
 b. pui aicea [possible intended meaning = vreau/trebuie să pui aicea]  
 put.2nd sg [possible intended meaning= I want you to put it here// you  
 must put it here]  
 ‘Put it here.’ (B. 2;0)



In what follows, we will be analysing the two forms with a view to identifying which of them has the properties of a possible OI-analogue.

### 3.5. The present tense of the indicative or the bare subjunctive?

Data like the ones in (19) above show that in some cases it is difficult to identify the early inflected forms as either indicative or BS. What may seem to be at first sight an indicative form may actually be a BS. And such cases are not restricted to 1<sup>st</sup> or 2<sup>nd</sup> person person contexts:

- (20) face mami. [possible intended meaning = vreau/trebuie să facă mami ?]  
 does mother [possible intended meaning = I want mother to do it ?]  
 ‘Mother should do it.’ (A. 2;2)

The cause of the difficulty of the analysis lies in the available syncretisms in the verbal paradigm in Romanian, where (i) the 1<sup>st</sup> and 2<sup>nd</sup> person singular and plural forms of the present tense of the indicative are identical to the 1<sup>st</sup> and 2<sup>nd</sup> person singular and plural forms of the subjunctive, and (ii) for a small number of verbs, all the inflected forms of the present tense of the indicative are identical to those of the subjunctive. In Table 8 below the shaded cells indicate the homophonous inflected forms:

Table 8

Indicative-subjunctive syncretism in Romanian

<i>cânta</i> ‘sing’	PR-IND	SUBJ	<i>tăia</i> ‘cut’	PR-IND	SUBJ
1 <sup>st</sup> sg	cânt	să cânt	1 <sup>st</sup> sg	taie	să taie
2 <sup>nd</sup> sg	cânți	să cânți	2 <sup>nd</sup> sg	taie	să taie
3 <sup>rd</sup> sg	cântă	să cânte	3 <sup>rd</sup> sg	taie	să taie
1 <sup>st</sup> pl	cântăm	să cântăm	1 <sup>st</sup> pl	tăiem	să tăiem
2 <sup>nd</sup> pl	cântați	să cântați	2 <sup>nd</sup> pl	tăiați	să tăiați
3 <sup>rd</sup> pl	cântă	să cânte	3 <sup>rd</sup> pl	taie	să taie

This shows that many of the early inflected forms with modal value can be either present tense forms of the indicative or BS forms. It is difficult to distinguish between the two because the early attested 1<sup>st</sup> and 2<sup>nd</sup> person forms of the present tense of the indicative can express, besides on-going events, volition/ intention and orders:

- (21) Dă o bomboană de-acolo.  
 give.2 sg a candy from over there  
 ‘(You should) give a candy from other there.’ (A. 2;4)

The early system uses a strategy which is also available in the target system. BSs used with imperative force are also attested in the adult grammar, but their use is reduced to a very small number of specific contexts and it is mainly formulaic:

- (22) a. Fiarbă vinu-n cupe.  
 boil.subj.3rd sg wine.the in bowls  
 ‘Let the wine boil in bowls.’  
 b. Întâmplă-se ce s-o întâmpla.  
 happen.subj.3rd.sg what refl it happens  
 ‘Come what may.’

Their early overuse in modal contexts becomes more obvious at the moment when the subjunctive particle *să* emerges (at 2;02 and an MLU of 2.180 in the A. corpus, and at 1;11 and an MLU of 1.406 in the B. corpus). This coincides with the emergence of distinct inflected subjunctive forms (in the case of the 3<sup>rd</sup> person). Interestingly, the subjunctive has deontic value from the very first attested forms and it is found in two types of context: as the complement of a verb which requires obligatory mood shift, such as *a vrea* ‘want’, *a trebui* ‘must/need’ or in purpose clauses. The data show, as expected, that the first subjunctives occur in obligatory contexts first:

- (23) a. trebuie să văd  
 must 3rd sg să see 1st sg  
 ‘I must see.’ (B. 2;2)  
 b. Merg să iau borș la tanti Mița  
 go 1st sg să take borsch at aunt Mița’s  
 ‘I’ll go and buy borsch at aunt Mița’s.’ (B. 2;2)

An obvious trade off between the present tense of the indicative (used with directive force) and the *să* subjunctive can be noticed in both corpora. After the emergence of the modal particle, the children optionally use a *să* subjunctive or a BS in similar contexts. In (24a) and (24b) the particle is optionally used in the complement of a modal verb by the same child, at the same age, during the same recording session:

- (24) a. vrei [să] papi pe măsuța asta.  
 want.2 sg [să] eat.2sg on table.the this  
 ‘You want to eat at this table.’ (A. 2;6)  
 b. nu pot să mă ridic.  
 not can.1 sg să me refl. stand.up.1 sg  
 ‘I cannot stand up.’ (A. 2;6)

A gradual increase in the use of the modal particle and a gradual decrease in what seems to be an indicative form with modal value is noticed. This correlation points to a trade off between functionally equivalent structures (see Figures 2 and 3 below):

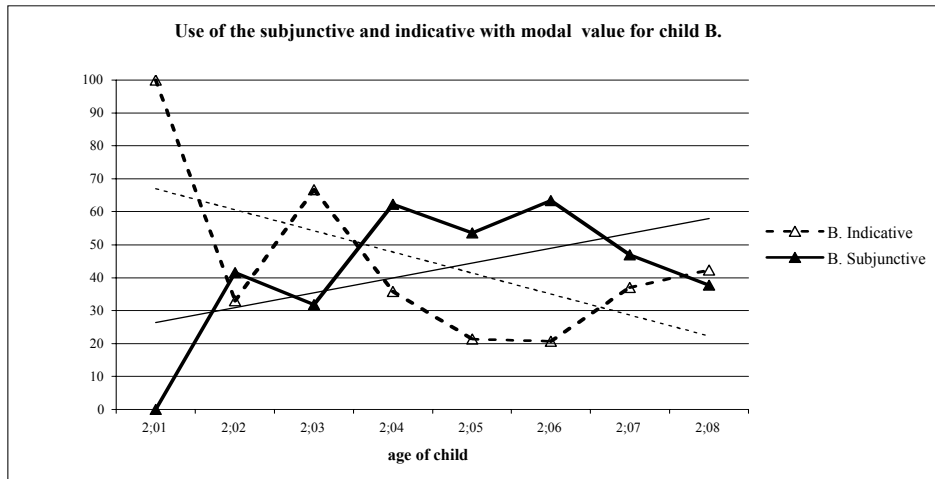


Fig. 2. The trade off between the indicative (used with modal value) and the *să* subjunctive: the B. corpus.

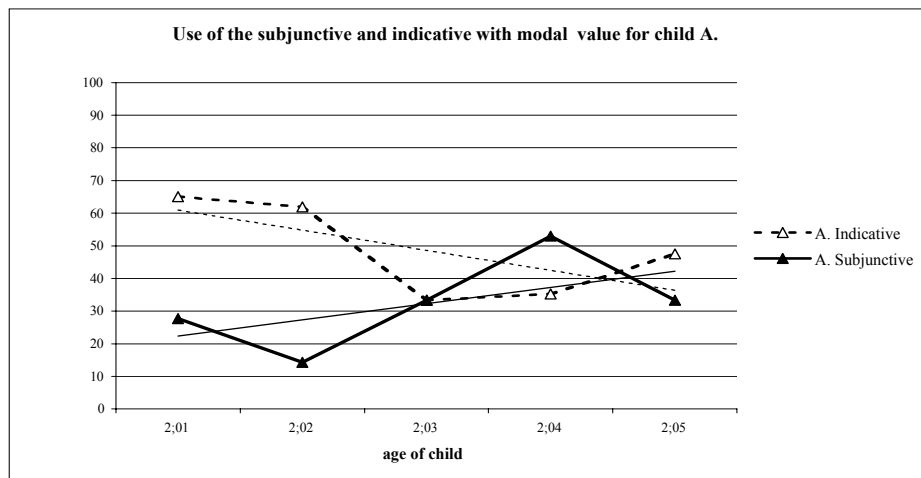


Fig. 3. The trade off between the indicative (used with modal value) and the *să* subjunctive: the A. corpus

At first sight, the absence of the modal particle *să* during the early stages and its optional omission after emergence leads to the possible conclusion that the trade off reduces to the acquisition of the modal particle *să*, i.e. it is the analogue of the decrease of OIs as modals increase in OI languages (Blom 2002). The Romanian

*să*, however, has a hybrid status (Farkas 1985); it can occur in the inflectional domain of the verb as a marker of mood and it can also move to C in the absence of a lexical complementizer. The presence of *să* signals, besides mood, finiteness. It is plausible to assume that for the early grammar, the emergence of *să* indicates that an active C-domain is fully available and that finiteness is gradually becoming part of the system. The short stage when the particle is optionally omitted (in the B. corpus 1;11-2;4, in the A. corpus 2;1-2;6) can be interpreted as the analogue of the OI stage in OI-languages. Romanian children optionally use a BS (a non-finite form) in contexts where a finite form is required in the target language:

- (25) a. Hai să facem un castel. Aicea facem o castel.  
 let us *să* make 1<sup>st</sup> pl a castle. Here make 1<sup>st</sup> pl a castle  
 ‘Let’s build a castle. We (should) build a castle here.’ (B. 2;4)
- b. Să plimbî cu bicicleta # te urci aicea.  
*să* walk 2nd sg with bike.the # you.refl Acc climb 2nd sg here  
 ‘You should ride the bicycle # you (should) climb up here’. (B. 2;4)

As can be seen, the BS conveys the modal values of early OIs (volition, imperative force) and it is (arguably) an underspecified form. Interestingly, the frequency of BSs in Romanian is comparable to the frequency of OIs in other Romance languages (see Table 9 below):

Table 9

The use of optional BSs in Romanian compared to early infinitives in null subject Romance languages

Language	%RI / BS
Catalan (Bel 2001)	0% - 3% RI
Italian (bilingual) (Salustri, Hyams 2003)	2% - 7% RI
Spanish (Bel 2001)	0%- 2% RI
Romanian	<b>3% BS</b>

In OI languages bare infinitives are rarely attested in the adult system in a very restrictive set of contexts. BSs with imperative force are also rarely attested in adult Romanian, being licit in a small number of contexts. This indicates that the early grammar does not differ qualitatively from the target grammar. Schütze (2010) defines the OI stage as involving “underspecification of features of the Infl system within the narrow syntax but no missing structure and no nonadult spell-out principles” (p. 250). The Romanian BS seems to have these properties. During the “optional *să*” stage, the imperative force feature is checked via Merge of *să* or, when the particle is omitted, via pragmatic inference. Both alternatives are available in the target grammar. When *să* emerges, checking of mood features via Merge leads to a gradual decrease in the use of BS.

We propose that the OI analogue in Romanian is the BS. In this respect Romanian patterns with Greek, where a language specific form, the bare perfective, similar to the bare subjunctive in Romanian, has been analysed as the OI-analogue (Varlokosta *et al.* 1998, Hyams 2002, 2005). But Romanian, unlike Greek, has an infinitival form. However, no bare infinitive has been attested in finite contexts in early Romanian.

#### 4. CONCLUSIONS

The goal of the present paper has been to identify a possible OI analogue in child Romanian. We have examined the early non-finite verbal forms which Romanian children use in contexts in which the target grammar requires finite forms. Three possible accounts have been considered. The first one assumes that early infinitives are attested both in Germanic and Romance languages. The second approach tries to look for OI analogues starting from the verbal form which is the most frequently encountered in the early grammars. For various Romance languages, this form has been argued to be the present tense of the indicative. A third approach focuses on the modal interpretation of early optional infinitives and looks for forms with similar modal value which are overused by children; it identifies the imperative as a possible optional infinitive analogue in a variety of languages. We have showed that these approaches are not borne out by the Romanian data. The data which have been examined provide evidence that the imperative cannot be the Romanian OI-analogue, as predicted by Salustri, Hyams (2003). The imperative is not the most frequently encountered form in early speech. Romanian children do not use the imperative more frequently than children who acquire an OI-language or than adults, nor does the percentage of used imperatives decrease with age as expected if it were an early overused form. Two other inflected verbal forms are attested during the early stages: the present tense of the indicative and the BS, a subjunctive form without the modal particle *să*. The third person singular form of the present tense of the indicative is the most frequently encountered one. In this, Romanian follows a pattern also found in Spanish, Catalan, Basque, French and Greek. However, the optionality associated with OIs can be detected in the system only after the emergence of the modal particle *să*. It is only after its emergence that non-finite forms (BS) optionally used in finite contexts can be identified in the corpora. The trade off between BSs and *să* subjunctives is similar to the trade off between OIs and structures with modal verbs reported for OI-languages (Blom 2002, among others).

We have argued that the Romanian OI-analogue is the BS. In this respect, Romanian patterns with Greek, a Balkan language with no infinitive form. Data from child Romanian adduce evidence in favour of the view that the OI-analogue is language specific (as argued, for example, in Wexler *et al.* 1994, Varlokosta *et al.* 1996).

We believe that the present investigation illustrates how hypotheses about early underspecified forms might benefit from the analysis of language specific properties as well as from a qualitative analysis of the data. Our findings provide evidence that a verbal form which is overused in development need not be the analogue of the OI.

#### REFERENCES

- Avram, L., 1999, *Auxiliaries and the Structure of Language*, București, Editura Universității din București.
- Avram, L., 2000, “O analiză minimalistă a cliticelor în acuzativ din română”, *Studii și cercetări lingvistice*, LI, 1, 33–47.
- Avram, L. 2010, “Early optional infinitives or early default forms? The view from child Romanian”, paper presented at The Annual Conference of *Transilvania University*, Brașov, April 16-17.
- Avram, L., M. Coene, 2005, “On the acquisition of finiteness. The case of child Romanian”, in: M. Coene, L. Tasmowski (eds.), *On the Expression of Time and Space*, Cluj-Napoca, Clusium, 151–172.
- Avram, L., M. Coene, 2009, “Null objects and Accusative clitics in Romanian”, *Bucharest Working Papers in Linguistics*, XI, 1, 233–254.
- Bel, A., 2001, “The projection of aspect: A key in the acquisition of finiteness?”, in: M. Almgren *et al.* (eds.), *Research in Child Language Acquisition. Proceedings of the 8<sup>th</sup> Conference of the International Association for the Study of Child Language*, Somerville, MA, Cascadilla Press, 1274–1313.
- Blom, E., 2002, “On the use and interpretation of root infinitives in early child Dutch”, in: S. Barbiers, F. Beukema, W. van der Wurff (eds.), *Modality and its Interaction with the Verbal System*, Amsterdam, John Benjamins, 103–131.
- Buesa García, C., 2007, “Early root infinitives in a null-subject language: A longitudinal case study of a Spanish child”, in: A. Belykova *et al.* (eds.), *Proceedings of the 2<sup>nd</sup> Conference on Generative Approaches to Language Acquisition in North America (GALANA)*, Somerville, MA, Cascadilla Proceedings Project, 39–50.
- Castro, D., E. Gavruseva, 2003, “Aspect and finiteness in the English/Spanish bilingual acquisition”, *First Language*, 23, 2, 171–192.
- Coene, M., H. Taelman, L. Avram, S. Gillis, 2005, “Early bare infinitives are universally non-finite...but not always infinitives”, Paper presented at Congress of International Association for the Study of Child Language (IASCL), Berlin, July 2005.
- Dascălu-Jinga, L., 2002, *Corpus de română vorbită [CORV]. Eșantioane*, București, Oscar Print.
- Ezeizabarrena, M. J., 1997, “Morfemas de concordancia con el sujeto y con los objetos en el castellano infantil”, in: A. T. Pérez-Leroux, W. R. Glass (eds.), *Contemporary Perspectives on the Acquisition of Spanish*, Vol. 1: Developing grammars, Somerville, MA, Cascadilla Press, 21–36.
- Farkas, D., 1978, “Direct and indirect object reduplication in Romanian”, in: D. Farkas, W. M. Jacobsen, K. W. Todrys (eds.), *Papers from the Fourteenth Regional Meeting of Chicago Linguistic Society*, 1978, 88–97.
- Grinstead, J., 1998, *Subjects, Sentential Negation and Imperatives in Child Spanish*, Doctoral dissertation, University of California, Los Angeles.
- Grinstead, J., 2000, “Case, inflection and subject licensing in child Catalan and Spanish”, *Journal of Child Language*, 27, 119–155.
- Guasti, M. T., 1993/4, “Verb syntax in Italian child grammar: Finite and non-finite verbs”, *Language Acquisition*, 3, 1, 1–40.

- Hoekstra, T., N. Hyams, 1998, "Aspects of root infinitives", *Lingua*, 106, 1, 81–112.
- Hyams, N., 2002, "Clausal structure in child Greek. A reply to Varlokosta, Vainikka and Rohrbacher and a reanalysis", *The Linguistic Review*, 19, 3, 225–269.
- Hyams, N., 2005, "Child non-finite clauses and the modal-aspect connection: Evidence from child Greek", in: P. Kempchinsky, R. Slabakova (eds.), *The Syntax, Semantics and Acquisition of Aspect*, Dordrecht, Kluwer, 293–316.
- Isac, D., Jakab, E., 2004, "Mood and force features in the languages of the Balkans", in: O. Tomic (ed.), *Balkan Syntax and Semantics*, Amsterdam: John Benjamins, 315–338.
- Legate, J. A., C. Yang, 2007, "Morphosyntactic learning and the development of tense", *Language Acquisition*, 14, 315–344.
- Liceras, J. M., A. Bel, S. Perales, 2006, "Living with optionality: Root infinitives, bare forms and inflected forms in child null subject languages", in: N. Sagarra, A. J. Toribio (eds.), *Selected Proceedings of the 9th Hispanic Linguistics Symposium*, Somerville, MA: Cascadilla Press, 203–216.
- Liceras, J.M., S. Perales, A. Bel, 2007, "Modality, non-finite forms and the manifestation of the RI stage in null and non-null subject languages", in: S. Baauw, J. van Kampen, M. Pinto (eds.), *The Acquisition of Romance Languages. Selected Papers from The Romance Turn II 2006*, Utrecht, LOT, 97–111.
- MacWhinney, B., 2000, *The CHILDES Project: Tools for Analyzing Talk*, Third edition, Mahwah, NJ, Lawrence Erlbaum Associates.
- Manea, D., G. Pană Dindelegan, R. Zafiu, 2008, "Verbul", in: V. Guțu Romalo (ed.), *Gramatica limbii române*, vol. I, *Cuvântul*, București, Editura Academiei Române, 323–584.
- Paradis, J., M. Crago, M., 2001, "The morphosyntax of specific language impairment in French: An extended optional default account", *Language Acquisition*, 9, 4, 269–300.
- Phillips, C., 1995, "Syntax at age two: Cross-linguistic differences", in: C. Schütze, J. Ganger, K. Broihier (eds.), *Papers on Language Processing and Acquisition. MIT Working Papers in Linguistics*, 26, 325–382.
- Pierce, A., 1992, *Language acquisition and syntactic theory: A comparative analysis of French and English child grammars*, Dordrecht, Kluwer.
- Pratt, A., J. Grinstead, 2007, "Optional infinitives in child Spanish", in: A. Belikova, L. Meroni, M. Umeda (eds.), *Proceedings of the 2<sup>nd</sup> Conference on Generative Approaches to Language Acquisition in North America (GALANA)*, Somerville, MA: Cascadilla Proceedings Project, 351–362.
- Rhee, J., K. Wexler, 1995, "Optional infinitives in Hebrew", in: C. Schütze, J. Ganger, K. Broihier (eds.), *Papers on Language Processing and Acquisition, MIT Working Papers in Linguistics*, 26, 383–402.
- Rizzi, L., 1993/1994, "Some notes on linguistic theory and language development", *Language Acquisition*, 3, 4, 371–394.
- Rohrbacher, B., S. Vainikka, 1994, "Verbs and subjects before age 2: The earliest stages in Germanic L1 acquisition", in: J. Beckman (ed.), *Proceedings of NELS*, 25, vol.2, GLSA, Amherst, 55–69.
- Rus, D., P. Chandra, 2006, "Child Slovenian imperatives: Root infinitives analogues?", in A. Belletti, E. Bennati, C. Chesi, E. DiDomenico, I. Ferrari (eds.), *Language Acquisition and Development. Proceedings of GALA 2005*, Cambridge, Cambridge Scholars Publishers, 463–475.
- Salustri, M., N. Hyams, 2003, "Is there an analogue to the RI stage in the null subject languages?", in: B. Beachley, A. Brown, F. Conlin (eds.), *Proceedings of the 27<sup>th</sup> Annual Boston University Conference on Language Development*, vol. 2, Cambridge, MA, Cascadilla Press, 692–703.
- Salustri, M., N. Hyams, 2006, "Looking for the universal core of RI", in: V. Torrens, L. Escobar (eds.), *The Acquisition of Syntax in Romance Languages*, Amsterdam, John Benjamins, 159–182.

- Schütze, C., 2010, The status of nonagreeing *don't* and theories of root infinitives”, *Language Acquisition*, 17, 235–271.
- Torrens, V., 1995, *The Acquisition of syntax in Spanish and Catalan: The functional Category Inflection*, Barcelona, University of Barcelona Press.
- Varlokosta, S., A. Vainikka, B. Rohrbacher, 1996, “Root infinitives without infinitives”, in: A. Stringfellow, D. Cahana-Amitay, E. Hughes, A. Zukowski (eds.), *Proceedings of the 20<sup>th</sup> Annual Boston University Conference on Language Development*, vol. 2, Somerville, M, Cascadilla Press, 816–827.
- Vasilescu, A., I. Vântu, 2008, ‘Tipuri de enunțuri în funcție de scopul comunicării’, in: V. Guțu Romalo (ed.), *Gramatica limbii române*, vol. II, *Enunțul*, București, Editura Academiei Române, 28–29.
- Weverink, M., 1989, *The subject in relation to inflection in child language*, MA thesis, University of Utrecht.
- Wijnen, F., 1994, “Incremental acquisition of phrase structure: A longitudinal analysis of verb placement in Dutch child language”, paper presented at the *NELS Conference* (Workshop on Language Acquisition), Philadelphia.
- Wexler, K., 1994, “Optional infinitives, head movement and the economy of derivations”, in: D. Lightfoot, N. Hornstein (eds.), *Verb Movement*, Cambridge, Cambridge University Press, 305–350.
- Wexler, K., 1998, “Very early parameter setting and the unique checking constraint: a new explanation of the optional infinitive stage”, *Lingua*, 106, 1, 23–79.
- Wexler, K., J. Schaeffer, G. Bol, 2004, “Verbal syntax and morphology in typically developing Dutch children and children with SLI: How developmental data can play an important role in morphological theory”, *Syntax*, 7, 2, 148–198.
- Yang, C. D., 2000, *Knowledge and Learning in Natural Language*, doctoral dissertation, MIT.